

Caratteristiche tecniche TRIESTE

Specifiche di prodotto / Product specifications

Armatura / Weave	reps ordito/ warp reps
Spessore / Thickness	0,85 mm
Peso / Weight - UNI 9213/3	485 gr/m ²

Densità armatura / Weave density - UNI 1049/2

Ordito / Warp	18,2 fili-yarn /cm
Trama / Weft	5,8 fili-yarn /cm

Prestazioni tecniche / Technical specifications

Carico rottura / Breaking load - UNI EN ISO 1421

Ordito / Warp	150 Kg/5cm
Trama / Weft	55 Kg/5cm

Allungamento a rottura / Breaking elongation - UNI EN ISO 1421

Ordito / Warp	20 %
Trama / Weft	20 %

Composizione / Composition

Titolo filato Ordito / Warp yarn	2.000 dtex
Titolo filati Trama / Weft yarn	2.000 dtex

Componenti tessuto / Fabric components

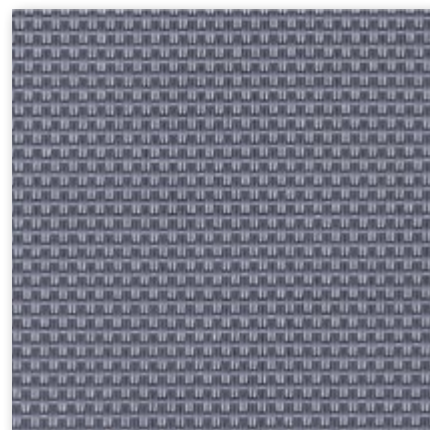
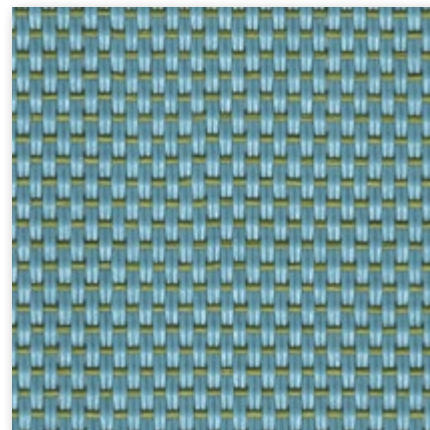
COMPOUND PVC	85 %
PES	15 %

Finitura / Finishing

Carico rottura / Breaking load - UNI EN ISO 1421

Termofinissaggio / Thermo-fixing	SI / YES
Altezza produzione / Height production	Min. 140 cm - Max. 235 cm

Tolleranza nei dati ± 5 % / Tolerance range ± 5
RELEASE: 08/01/2018



ISO 9001
Certificato n. 5206/0

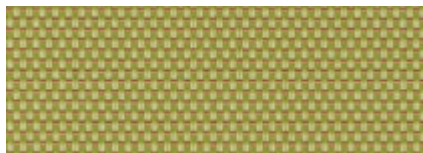


ISO 9001
Registration number: IT-70404

Campioni colore TRIESTE

Color samples for TRIESTE

TBL (tessuto pieno)



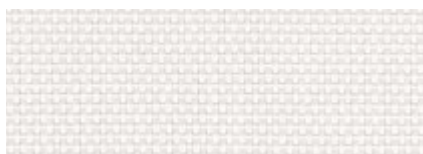
Barcola 3149



Basovizza 2224



Beige 5161



Bianco 0108



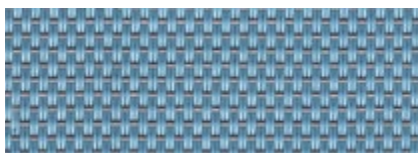
Canovella 3111



Duino 4039



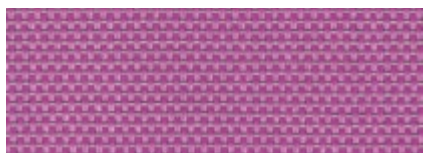
Grigio 0600



Miramare 4020



Perla Nera 0604



Prosecco 2161



Talpa 5102



Tortora 0711